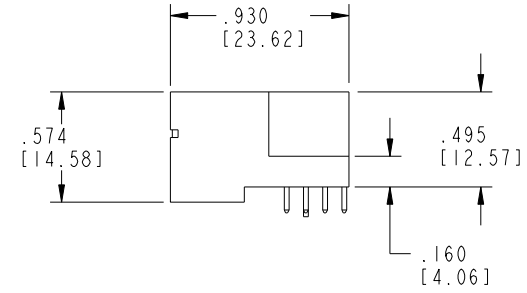
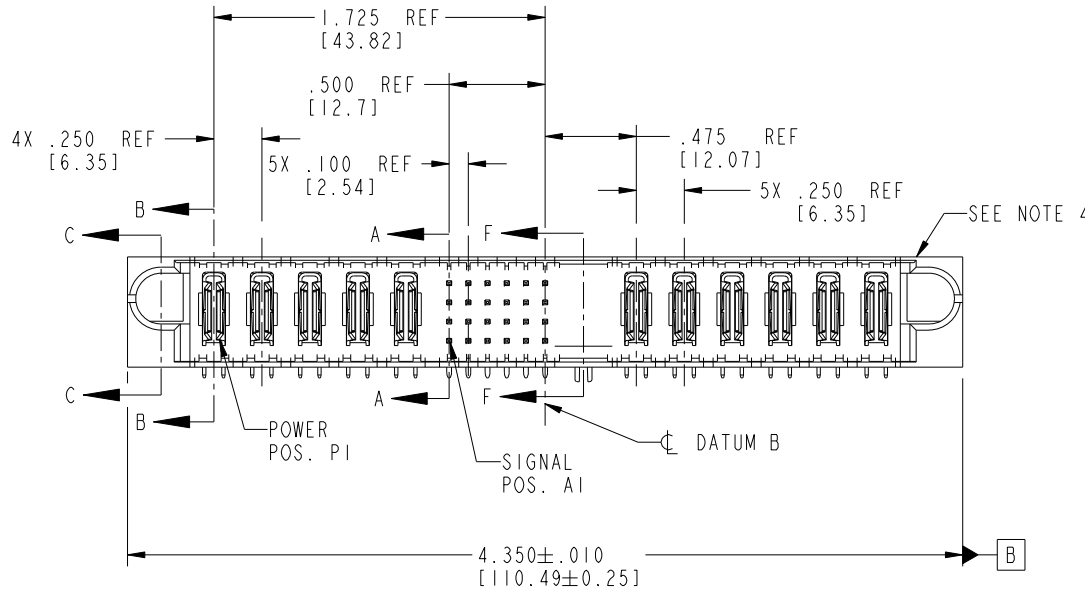
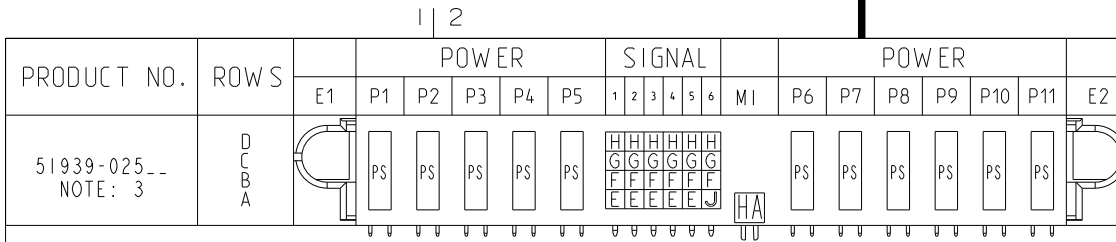


Tous droits strictement réservés. Reproduction ou communication a des tiers interdite sous quelque forme que ce soit sans autorisation écrite du propriétaire. Propriété de c FCI. Droits de reproduction FCI.

All rights strictly reserved. Reproduction or issue to third parties in any form whatever is not permitted without written authority from the proprietor. Property of FCI. Copyright FCI.



CODE	DIM "M" MATING LENGTH	CONTACT TYPE
E	.220 [5.59]	SIGNAL
F	.220 [5.59]	SIGNAL
G	.220 [5.59]	SIGNAL
H	.220 [5.59]	SIGNAL
J	.170 [4.32]	SIGNAL
PS	N/A [N/A]	POWER
HA	N/A [N/A]	HOLD-DOWN

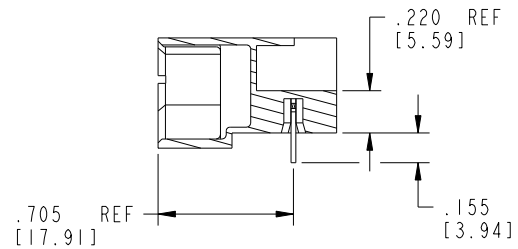
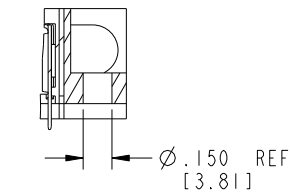
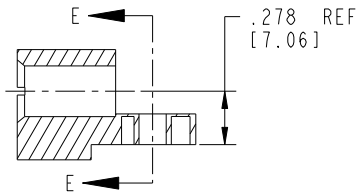
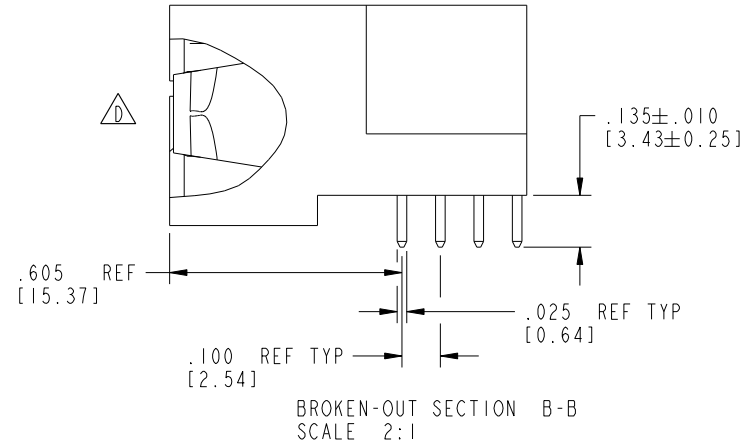
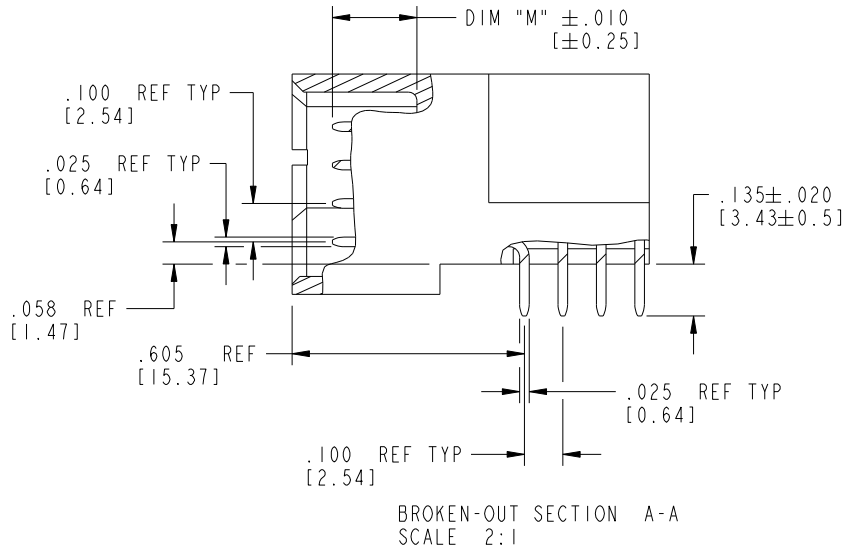
mat'l code				SEE NOTE 2		tolerances unless otherwise specified		CUSTOMER		 www.fciconnect.com	
ltr	ecn no.	dr	date	linear	.XX±.01/0.X±0.13	projection		COPY		title	
A	V21369	CGD	08/21/02		.XXX±.005/0.XX±0.13			A		5P + 24S + 1M + 6P	
B	DG05-0240	GuoJM	07/26/05	angles	.XXX±.0020/0.XXX±0.051			INCH/MM		RIGHT ANGLE SOLDER HEADER	
C	DG06-0008	JMG	01/07/06		0°+2°	scale		1:1		product family	
D	DG08-0272	WD	09/28/08	dr	C. DAILY 08/21/02	A		51939-025		PwrBlade	
				engr	M. MOSTOLLER 08/21/02	size		dwg no		code	
				chr	M. MOSTOLLER 08/21/02	A		51939-025		213	
				appd	M. MOSTOLLER 08/21/02	sheet		1 of 4		sheet	
sheet index		revision sheet		D	D	D		D		sheet	
		1 2		D	D	3		4		1 of 4	

Tous droits strictement réservés. Reproduction ou communication a des tiers interdite sous quelque forme que ce soit sans autorisation écrite du propriétaire. Propriété de c FCI. Droits de reproduction FCI.

All rights strictly reserved. Reproduction or issue to third parties in any form whatever is not permitted without written authority from the proprietor. Property of FCI. Copyright FCI.



PRODUCT NUMBER  
51939-025\_\_  
NOTE: 3



mat'l code		SEE NOTE 2		tolerances unless otherwise specified		CUSTOMER		FCI	
lir	ecn no.	dr	date	linear	.XX±.01/0.X±0.3	COPY		www.fciconnect.com	
D				projection	.XX±.005/0.XX±0.13	INCH/MM		title 5P + 24S + 1M + 6P RIGHT ANGLE SOLDER HEADER	
				angles	.XXX±.0020/0.XXX±0.051	scale		product family PwrBlade code 213	
				dr	0°±2°	1:1		size dwg no 51939-025 sheet 2 of 4	
				enrg	C. DAILY 08/21/02				
				chr	M. MOSTOLLER 08/21/02				
				appd	M. MOSTOLLER 08/21/02				
sheet index	revision sheet								

Pro/E

PDM: Rev: D

STATUS: Released

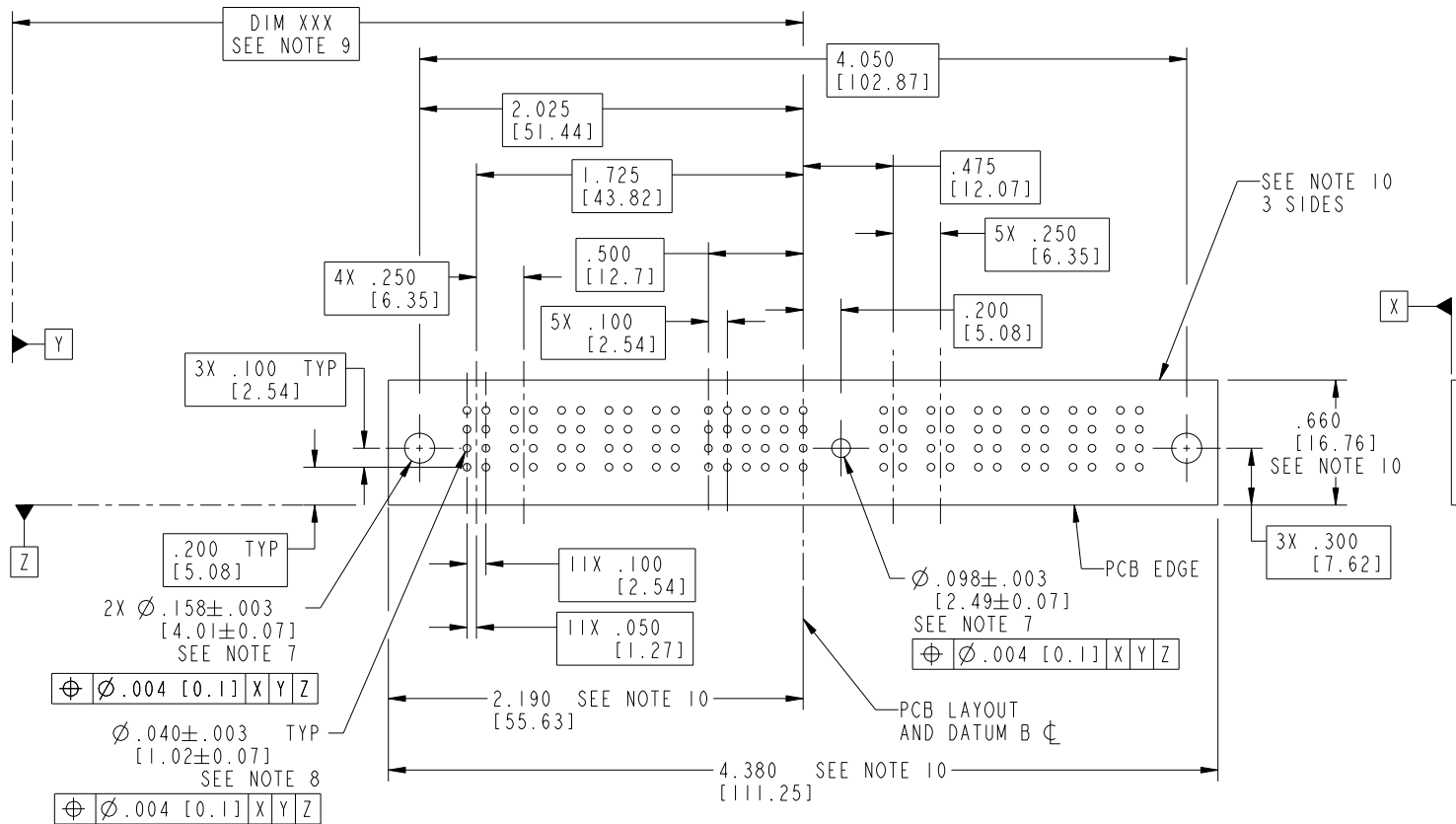
Printed: Oct 17, 2008

Tous droits strictement réservés. Reproduction ou communication a des tiers interdite sous quelque forme que ce soit sans autorisation écrite du propriétaire. Propriété de c FCI. Droits de reproduction FCI.

All rights strictly reserved. Reproduction or issue to third parties in any form whatever is not permitted without written authority from the proprietor. Property of FCI. Copyright FCI.



PRODUCT NUMBER  
51939-025\_\_  
NOTE: 3



RECOMMENDED PCB LAYOUT

mat'l code		SEE NOTE 2		tolerances unless otherwise specified		CUSTOMER		 www.fciconnect.com	
lfr	ecn no.	dr	date	linear	.XX±.01/0.X±0.3	COPY		title 5P + 24S + 1M + 6P	
D				angles	.XX±.005/0.XX±0.13 XXXX±.0020/0.XXX±0.051 0°±2°	projection		RIGHT ANGLE SOLDER HEADER	
				dr	C. DAILY 08/21/02	INCH/MM		product family PwrBlade	
				engr	M. MOSTOLLER 08/21/02	scale		code 213	
				chr	M. MOSTOLLER 08/21/02	1:1		sheet 3 of 4	
				appd	M. MOSTOLLER 08/21/02	A		51939-025	
sheet index	revision sheet								

Pro/E

PDM: Rev: D

STATUS: Released

Printed: Oct 17, 2008

PRODUCT NUMBER  
51939-025\_\_  
NOTE: 3

NOTES:

1. DIMENSIONS AND TOLERANCES ARE IN ACCORDANCE WITH ASME Y14.5M, 1994 UNLESS OTHERWISE SPECIFIED.

CONNECTOR NOTES:

- 2. HOUSING MATERIAL: UL 94 V-0 GLASS FILLED HIGH-TEMP THERMOPLASTIC  
POWER CONTACT MATERIAL: COPPER ALLOY  
SIGNAL PIN MATERIAL: COPPER ALLOY

3. SEE ITEM 1 & 2 IN PRINT 10064183 FOR PLATING SPEC OF 51939-025 AND 51939-025LF RESPECTIVELY.

4. MANUFACTURER'S NAME, P/N, AND DATE CODE TO APPEAR ON THIS SURFACE.

5. PRODUCT SPECIFICATION GS-12-149.  
APPLICATION SPECIFICATION BUS-20-067.

PCB NOTES:

- 6. ALL HOLE DIAMETERS ARE FINISHED HOLE SIZE.
- 7. MOUNTING HOLES, WHERE APPLICABLE, ARE UNPLATED.

8.  $\varnothing .0453 \pm .0010$  [1.151  $\pm$  0.025] DRILLED HOLES PLATED WITH .0003 [0.008] MIN SnPb OVER .001 [0.03] TO .003 [0.08] Cu PLATING TO ACHIEVE  $\varnothing .040 \pm .003$  [1.02  $\pm$  .07] HOLE.

9. "DIM XXX" TO BE DETERMINED BY THE CUSTOMER.

10. CONNECTOR KEEP-OUT ZONE.

11. A  $\Delta$  SYMBOL WILL BE NEXT TO ANY DIMENSION, VIEW, OR NOTE WHICH HAS BEEN MODIFIED WITH THE CURRENT DRAWING REVISION.

mat'l code				SEE NOTE 2		tolerances unless otherwise specified		CUSTOMER		FCI	
ltr	ecn no.	dr	date	linear	.XX $\pm$ .01 / 0.X $\pm$ 0.3	projection		COPY		www.fciconnect.com	
D					.XXX $\pm$ .005 / 0.XX $\pm$ 0.13					title 5P + 24S + 1M + 6P	
				angles	.XXX $\pm$ .0020 / 0.XXX $\pm$ 0.051					RIGHT ANGLE SOLDER HEADER	
				dr	C. DAILY 08/21/02	INCH/MM		product family PwrBlade		code 213	
				engr	M. MOSTOLLER 08/21/02	scale 1:1		size A		sheet 4 of 4	
				chr	M. MOSTOLLER 08/21/02			51939-025			
				appd	M. MOSTOLLER 08/21/02						
sheet index		revision sheet									

Tous droits strictement réservés. Reproduction ou communication a des tiers interdite sous quelque forme que ce soit sans autorisation écrite du propriétaire. Propriété de c FCI. Droits de reproduction FCI.



All rights strictly reserved. Reproduction or issue to third parties in any form whatever is not permitted without written authority from the proprietor. Property of FCI. Copyright FCI.